

JULIE

INDUSTRIES, INC.

Makers of StaticSmart Mission Critical Flooring

CARPET
VINYL
RUBBER

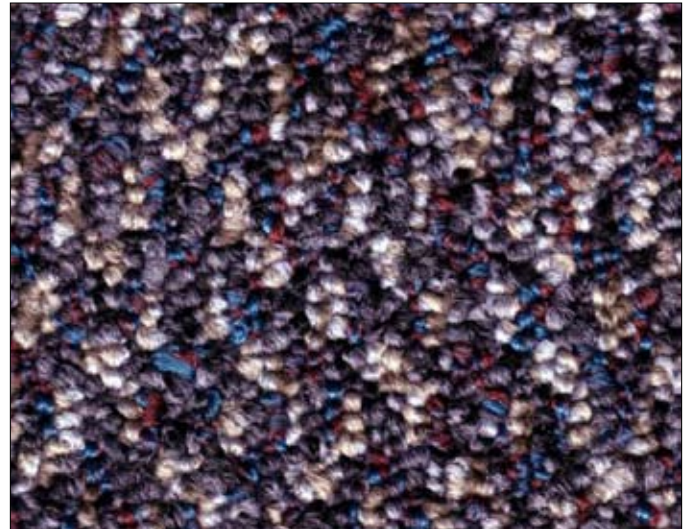
Due to color variations in printing and monitor resolution, please call (978) 276-0820 to request actual samples for accurate color.

DISCOVERY SERIES



4019 Columbus Blue/Classic

24" 12' SL



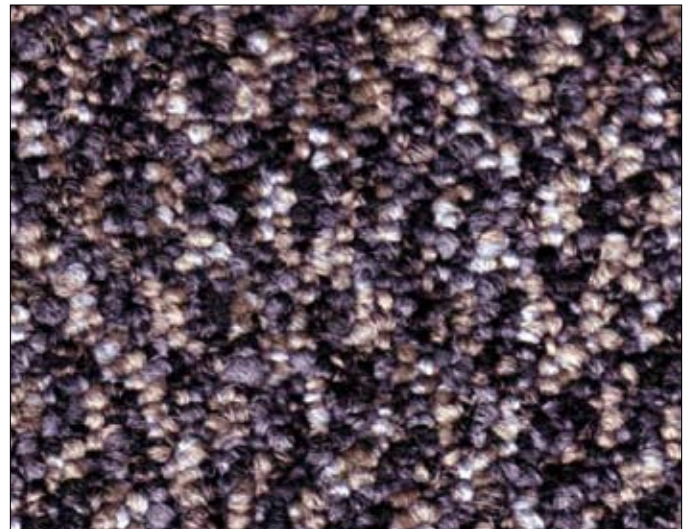
4030 Cortez/Contempo

24" 12' SL



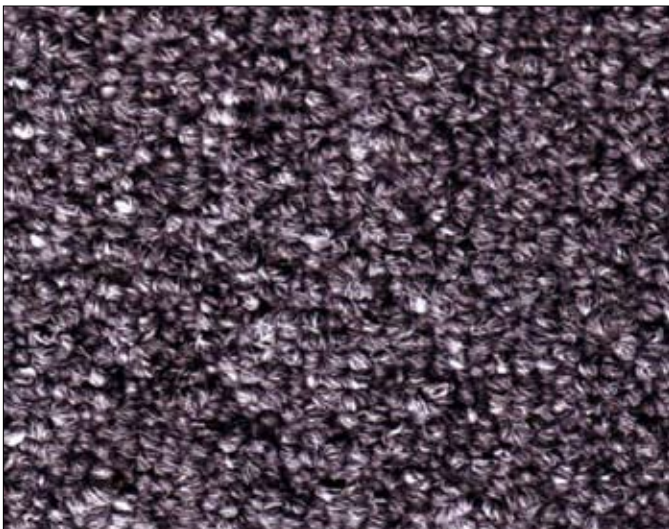
4004 Magellan/Classic

24" 12' SL



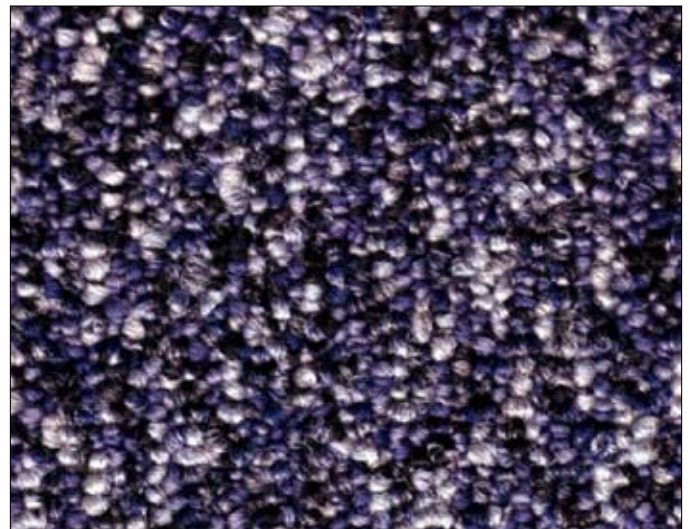
4070 Galileo/Contempo

24" 12' SL



4012 Shackleton Grey/Classic

24" 12' SL



4090 Livingstone/Contempo

24" 12' SL

StaticSmart™ ESD Carpet/Tile

Discovery Series static control carpet

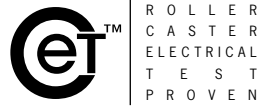
	Carpet Tile	Broadloom Carpet	StatLock for Access Floors
Construction:	Classic - textured loop, straight/PSP with Ecc Roll Contempo - textured graphic loop	Same	Same
Yarn Weight:	24 oz./sq. yd. (813.76 g/sm)	Same	Same
Total Weight:	98.98 oz./sq. yd.	54 oz./sq. yd.	80 oz./sq. yd.
Stitches per Inch:	Classic - 11 (43.31/10 cm) Contempo - 10 (39.37/10 cm)	Same Same	Same Same
Pile Height:	High: 6/32", low: 4/32" (h: 4.78 mm, l: 3.18 mm)	Same Same	Same Same
Fiber:	Classic - Solutia LXI nylon Contempo - Performa SD type 6 nylon	Same Same	Same Same
Sizes:	24" x 24"	12' broadloom	12' 3" factory applied to panel
Conductive Fiber:	Continuous conductive StaticSmart™ FibreLink monofilament in every tuft	Same	Same
kV Rating:	AATCC 134-1996 electrostatic propensity: less than 2 kV. Tested at 20% relative humidity at 20° Celsius and 70° Fahrenheit.		
Electrical Resistance:	ESD S7.1/NFPA 99 Resistive/resistance characterization of materials: RTT six or more readings between points placed 3 feet apart. Tested with an applied voltage of 100V. Measured in Ohms, 2.5 x 10 ⁴ minimum, 1.0 x 10 ⁸ maximum. RTG six or more readings from surface to groundable point. Tested with an applied voltage of 100V. Measured in Ohms, 2.5 x 10 ⁴ minimum, 1.0 x 10 ⁸ maximum Electrical Resistance/Voltage Test ANSI/ESD S-20.20, compliant when using approved conductive footwear system. Results within recommended range < 35 x 10 ⁶ Ohm or < 100 volts D.O.D. HDBK263A, Section 40.1.2: Meets recommended guidelines for sensitive ESD devices, Class 1. Meets FAA-STD-019e and Motorola R56 standards and guidelines for static control flooring. Roller Caster Electrical Test (CET) Assessment. After 100,000 chair caster cycles there was no depreciable change in conductivity or electrical performance. Lab data available on request.		
Groundable Path:	StaticSmart™ ground strip or RTG Connector™ Kit	StaticSmart™ ground strip	Ground panel to pedestal head
Grounding Frequency:	1 per 1,000 sq. ft.	Same	Each panel
Backing Systems:	Conductive Ecoworx® backing 100% PVC-free recyclable, made from recycled material	Dissipative unitary	StatLock dissipative polyurethane w/20# tuft bind and 10# edge lock
Adhesives:	Conductive releasable adhesive for carpet tile 1.0 x 10 ⁶ Ohms RTT	Premium high grade multipurpose	Conductive contact adhesive supplied by access floor mfr. 1.0 x 10 ⁶ Ohms RTT
Availability:	No minimums	Minimums may apply, please call for details	Minimums may apply, please call for details
Flammability:	ASTM E-648 flooring radiant panel - Class 1 (≥ .45 W/cm ²) ASTM E-662 NBS smoke density - less than 450	Same Same	Same Same
Installation:	Monolithic		

N + 1 PERMANENT STATIC PROTECTION

Due to color variations in printing and monitor resolution, please call (978) 276-0820 to request actual samples for accurate color.

**Ecoworx® is a registered trademark of Shaw, a Berkshire Hathaway Company
**This information is accurate and current but may be subject to change without notice. REV 12/07*

Julie Industries, Inc.
134 Park Street / PO Box 153
North Reading, MA 01864
978.276.0820
www.julieind.com



Tested and approved in accordance with the Carpet and Rug Institute's indoor air quality testing and labeling program. For more info call 800 822-8846.